

GESTO



GESTO TAMBUR MOTOR
GESTO DRUM MOTORS

Kullanım Alanları

- Yüksek performanslı her türlü konveyör
- Gıda Endüstrisi
- Teleskopik konveyörler
- Taş ocağı ve maden uygulamaları
- Mobil kırma & eleme uygulamaları
- Asfalt tesisleri
- Lojistik ve kargo uygulamaları
- Havaalanı konveyörleri
- Tarım tesisleri
- Depo yükleme bantları
- Beton ve çimento tesisleri
- Geri dönüşüm tesisleri

Özellikler

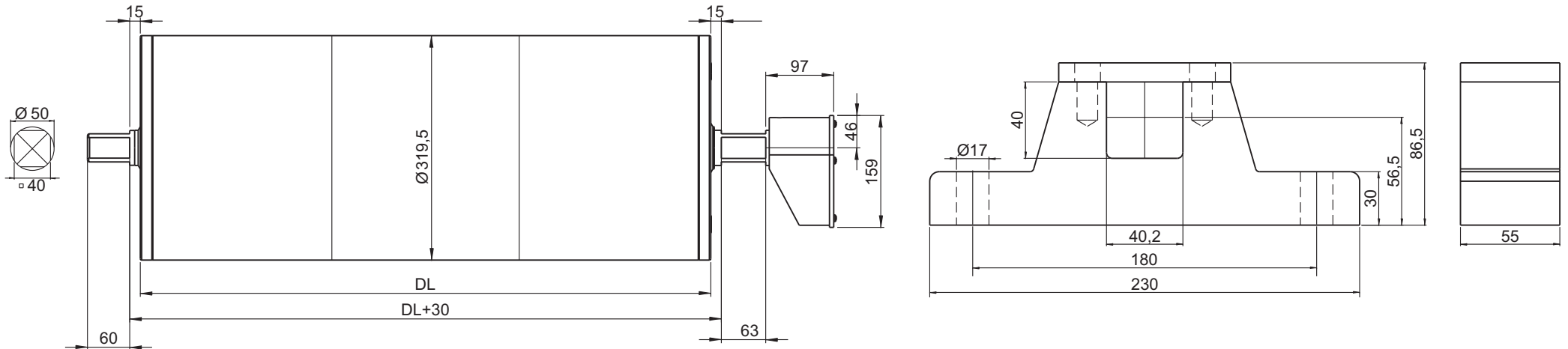
- Asenkron sincap kafes motor
- Mesnetleme braketleri
- Sertleştirilmiş çelik dişliler
- Bakım gerektirmez
- Frekans konvertörü uyumlu
- 3 Fazlı AC endüksiyon motor
- Dual voltaj
- Güçlü tandem sızdırmazlık
- Düşük ses
- İsteğe bağlı farklı opsiyonlar*

Application Areas

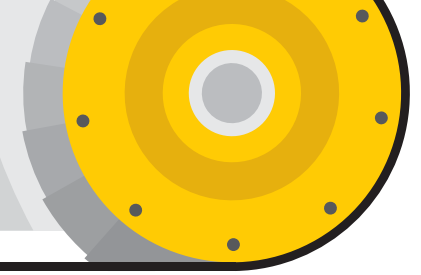
- High duty applications
- Food industry
- Warehouse loading
- Logistics-Postal applications
- Mobile crushing & screening
- Asphalt plants
- Agricultural plants
- Airport conveyors
- Recycling plants
- Mining applications
- Concrete and cement plants
- Telescopic conveyors

Features

- Asynchronous squirrel cage motor
- Mounting brackets
- Hardened steel
- Maintenance free
- Frequency convertor compatibility
- 3 Phase AC induction
- Dual voltage
- Double lipped tandem sealing
- Low noise
- Various options on request*



* Farklı ölçü istekleriniz için GESTO'ya danışınız.
For non-standard dimension requests contact GESTO.



Ürün Tipleri | Product Selection Table

| P (kW) | V (m/s) | M (Nm) | F (N) | n (1/min) |
|--------|---------|--------|-------|-----------|
| 7,50 | 4,60 | 247 | 1549 | 275 |
| | 4,00 | 285 | 1781 | 239 |
| | 3,60 | 316 | 1979 | 215 |
| | 3,20 | 356 | 2227 | 191 |
| | 3,00 | 379 | 2375 | 179 |
| | 2,80 | 407 | 2545 | 167 |
| | 2,50 | 455 | 2850 | 149 |
| | 2,30 | 495 | 3098 | 137 |
| | 2,00 | 569 | 3563 | 120 |
| | 1,80 | 632 | 3959 | 108 |
| | 1,60 | 711 | 4453 | 96 |
| | 1,50 | 759 | 4750 | 90 |
| | 1,40 | 813 | 5090 | 84 |
| | 1,25 | 911 | 5700 | 75 |
| | 1,10 | 1035 | 6478 | 66 |
| | 1,00 | 1138 | 7126 | 60 |
| | 0,90 | 1265 | 7917 | 54 |
| | 0,80 | 1423 | 8907 | 48 |
| 5,50 | 4,60 | 181 | 1136 | 275 |
| | 4,00 | 209 | 1306 | 239 |
| | 3,60 | 232 | 1451 | 215 |
| | 3,20 | 261 | 1633 | 191 |
| | 3,00 | 278 | 1742 | 179 |
| | 2,80 | 298 | 1866 | 167 |
| | 2,50 | 334 | 2090 | 149 |
| | 2,30 | 363 | 2272 | 137 |
| | 2,00 | 417 | 2613 | 120 |
| | 1,80 | 464 | 2903 | 108 |
| | 1,60 | 522 | 3266 | 96 |
| | 1,50 | 557 | 3484 | 90 |
| | 1,40 | 596 | 3732 | 84 |
| | 1,25 | 668 | 4180 | 75 |
| | 1,10 | 759 | 4750 | 66 |
| | 1,00 | 835 | 5225 | 60 |
| | 0,90 | 928 | 5806 | 54 |
| | 0,80 | 1043 | 6532 | 48 |

| P (kW) | V (m/s) | M (Nm) | F (N) | n (1/min) |
|--------|---------|--------|-------|-----------|
| 4,00 | 4,60 | 132 | 826 | 275 |
| | 4,00 | 152 | 950 | 239 |
| | 3,60 | 169 | 1056 | 215 |
| | 3,20 | 190 | 1188 | 191 |
| | 3,00 | 202 | 1267 | 179 |
| | 2,80 | 217 | 1357 | 167 |
| | 2,50 | 243 | 1520 | 149 |
| | 2,30 | 264 | 1652 | 137 |
| | 2,00 | 304 | 1900 | 120 |
| | 1,80 | 337 | 2111 | 108 |
| | 1,60 | 379 | 2375 | 96 |
| | 1,50 | 405 | 2534 | 90 |
| | 1,40 | 434 | 2714 | 84 |
| | 1,25 | 486 | 3040 | 75 |
| | 1,10 | 552 | 3455 | 66 |
| | 1,00 | 607 | 3800 | 60 |
| | 0,90 | 675 | 4223 | 54 |
| | 0,80 | 759 | 4750 | 48 |
| 0,70 | 867 | 5429 | 42 | |
| 0,60 | 1012 | 6334 | 36 | |
| 0,50 | 1214 | 7601 | 30 | |

| P (kW) | V (m/s) | M (Nm) | F (N) | n (1/min) |
|--------|---------|--------|-------|-----------|
| 3,00 | 4,60 | 99 | 620 | 275 |
| | 4,00 | 114 | 713 | 239 |
| | 3,60 | 126 | 792 | 215 |
| | 3,20 | 142 | 891 | 191 |
| | 3,00 | 152 | 950 | 179 |
| | 2,80 | 163 | 1018 | 167 |
| | 2,50 | 182 | 1140 | 149 |
| | 2,30 | 198 | 1239 | 137 |
| | 2,00 | 228 | 1425 | 120 |
| | 1,80 | 253 | 1583 | 108 |
| | 1,60 | 285 | 1781 | 96 |
| | 1,50 | 304 | 1900 | 90 |
| | 1,40 | 325 | 2036 | 84 |
| | 1,25 | 364 | 2280 | 75 |
| | 1,10 | 414 | 2591 | 66 |
| | 1,00 | 455 | 2850 | 60 |
| | 0,90 | 506 | 3167 | 54 |
| | 0,80 | 569 | 3563 | 48 |
| 0,70 | 650 | 4072 | 42 | |
| 0,60 | 759 | 4750 | 36 | |
| 0,50 | 911 | 5700 | 30 | |

P (kW) | Güç | Power
V (m/s) | Bant Hızı | Belt Speed
F (N) | Bant Çekiş Gücü | Belt Pull Force
M (Nm) | Moment | Moment
n (1/min) | Devir | Revolution

Ürün Tipleri | Product Selection Table

| P (kW) | V (m/s) | M (Nm) | F (N) | n (1/min) |
|--------|---------|--------|-------|-----------|
| 2,20 | 4,60 | 73 | 454 | 275 |
| | 4,00 | 83 | 523 | 239 |
| | 3,60 | 93 | 581 | 215 |
| | 3,20 | 104 | 653 | 191 |
| | 3,00 | 111 | 697 | 179 |
| | 2,80 | 119 | 746 | 167 |
| | 2,50 | 134 | 836 | 149 |
| | 2,30 | 145 | 909 | 137 |
| | 2,00 | 167 | 1045 | 120 |
| | 1,80 | 186 | 1161 | 108 |
| | 1,60 | 209 | 1306 | 96 |
| | 1,50 | 223 | 1393 | 90 |
| | 1,40 | 239 | 1493 | 84 |
| | 1,25 | 267 | 1672 | 75 |
| | 1,10 | 304 | 1900 | 66 |
| | 1,00 | 334 | 2090 | 60 |
| | 0,90 | 371 | 2322 | 54 |
| | 0,80 | 417 | 2613 | 48 |
| | 0,70 | 477 | 2986 | 42 |
| | 0,60 | 557 | 3484 | 36 |
| 0,50 | 668 | 4180 | 30 | |
| 0,40 | 835 | 5225 | 24 | |
| 0,35 | 954 | 5972 | 21 | |
| 0,30 | 1113 | 6967 | 18 | |
| 0,25 | 1336 | 8361 | 15 | |
| 0,23 | 1452 | 9088 | 14 | |
| 0,20 | 1670 | 10451 | 12 | |
| 0,16 | 2087 | 13063 | 10 | |

| P (kW) | V (m/s) | M (Nm) | F (N) | n (1/min) |
|--------|---------|--------|-------|-----------|
| 1,50 | 4,60 | 49 | 310 | 275 |
| | 4,00 | 57 | 356 | 239 |
| | 3,60 | 63 | 396 | 215 |
| | 3,20 | 71 | 445 | 191 |
| | 3,00 | 76 | 475 | 179 |
| | 2,80 | 81 | 509 | 167 |
| | 2,50 | 91 | 570 | 149 |
| | 2,30 | 99 | 620 | 137 |
| | 2,00 | 114 | 713 | 120 |
| | 1,80 | 126 | 792 | 108 |
| | 1,60 | 142 | 891 | 96 |
| | 1,50 | 152 | 950 | 90 |
| | 1,40 | 163 | 1018 | 84 |
| | 1,25 | 182 | 1140 | 75 |
| | 1,10 | 207 | 1296 | 66 |
| | 1,00 | 228 | 1425 | 60 |
| | 0,90 | 253 | 1583 | 54 |
| | 0,80 | 285 | 1781 | 48 |
| | 0,70 | 325 | 2036 | 42 |
| | 0,60 | 379 | 2375 | 36 |
| 0,50 | 455 | 2850 | 30 | |
| 0,40 | 569 | 3563 | 24 | |
| 0,35 | 650 | 4072 | 21 | |
| 0,30 | 759 | 4750 | 18 | |
| 0,25 | 911 | 5700 | 15 | |
| 0,23 | 990 | 6196 | 14 | |
| 0,20 | 1138 | 7126 | 12 | |
| 0,16 | 1423 | 8907 | 10 | |

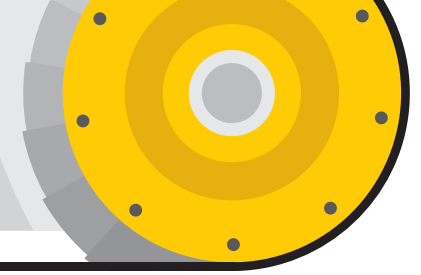
P (kW) | Güç
Power

V (m/s) | Bant Hızı
Belt Speed

F (N) | Bant Çekiş Gücü
Belt Pull Force

M (Nm) | Moment
Moment

n (1/min) | Devir
Revolution



Ürün Tipleri | Product Selection Table

| P (kW) | V (m/s) | M (Nm) | F (N) | n (1/min) |
|--------|---------|--------|-------|-----------|
| 4,60 | 36 | 227 | 275 | |
| 4,00 | 42 | 261 | 239 | |
| 3,60 | 46 | 290 | 215 | |
| 3,20 | 52 | 327 | 191 | |
| 3,00 | 56 | 348 | 179 | |
| 2,80 | 60 | 373 | 167 | |
| 2,50 | 67 | 418 | 149 | |
| 2,30 | 73 | 454 | 137 | |
| 2,00 | 83 | 523 | 120 | |
| 1,80 | 93 | 581 | 108 | |
| 1,60 | 104 | 653 | 96 | |
| 1,50 | 111 | 697 | 90 | |
| 1,40 | 119 | 746 | 84 | |
| 1,25 | 134 | 836 | 75 | |
| 1,10 | 152 | 950 | 66 | |
| 1,00 | 167 | 1045 | 60 | |
| 0,90 | 186 | 1161 | 54 | |
| 0,80 | 209 | 1306 | 48 | |
| 0,70 | 239 | 1493 | 42 | |
| 0,60 | 278 | 1742 | 36 | |
| 0,50 | 334 | 2090 | 30 | |
| 0,40 | 417 | 2613 | 24 | |
| 0,35 | 477 | 2986 | 21 | |
| 0,30 | 557 | 3484 | 18 | |
| 0,25 | 668 | 4180 | 15 | |
| 0,23 | 726 | 4544 | 14 | |
| 0,20 | 835 | 5225 | 12 | |
| 0,16 | 1043 | 6532 | 10 | |

| P (kW) | V (m/s) | M (Nm) | F (N) | n (1/min) |
|--------|---------|--------|-------|-----------|
| 4,60 | 25 | 155 | 275 | |
| 4,00 | 28 | 178 | 239 | |
| 3,60 | 32 | 198 | 215 | |
| 3,20 | 36 | 223 | 191 | |
| 3,00 | 38 | 238 | 179 | |
| 2,80 | 41 | 254 | 167 | |
| 2,50 | 46 | 285 | 149 | |
| 2,30 | 49 | 310 | 137 | |
| 2,00 | 57 | 356 | 120 | |
| 1,80 | 63 | 396 | 108 | |
| 1,60 | 71 | 445 | 96 | |
| 1,50 | 76 | 475 | 90 | |
| 1,40 | 81 | 509 | 84 | |
| 1,25 | 91 | 570 | 75 | |
| 1,10 | 103 | 648 | 66 | |
| 1,00 | 114 | 713 | 60 | |
| 0,90 | 126 | 792 | 54 | |
| 0,80 | 142 | 891 | 48 | |
| 0,70 | 163 | 1018 | 42 | |
| 0,60 | 190 | 1188 | 36 | |
| 0,50 | 228 | 1425 | 30 | |
| 0,40 | 285 | 1781 | 24 | |
| 0,35 | 325 | 2036 | 21 | |
| 0,30 | 379 | 2375 | 18 | |
| 0,25 | 455 | 2850 | 15 | |
| 0,23 | 495 | 3098 | 14 | |
| 0,20 | 569 | 3563 | 12 | |
| 0,16 | 711 | 4453 | 10 | |

P (kW) | Güç | Power
V (m/s) | Bant Hızı | Belt Speed
F (N) | Bant Çekiş Gücü | Belt Pull Force
M (Nm) | Moment | Moment
n (1/min) | Devir | Revolution

GESTO

www.gesto.com.tr

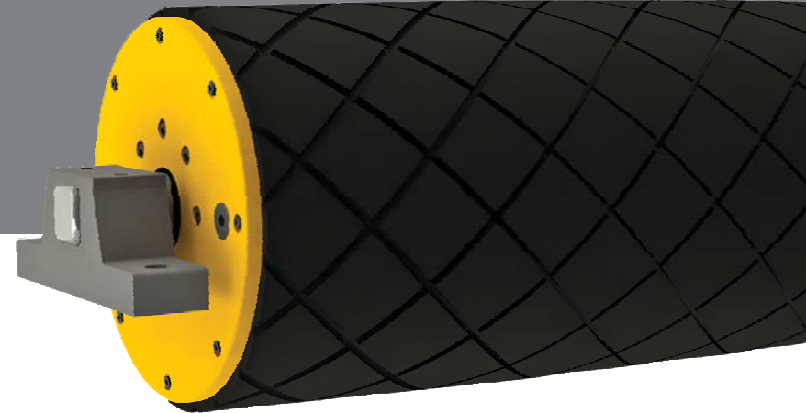
A | 1474. Sk. No: 13 İvedik / Ankara / TURKIYE

T | +90 312 354 37 86

@ | info@gesto.com.tr



www.gesto.com.tr



GESTO TAMIRIJE MOTOR
GESTO DRUM MOTORS